



RELIABILT®

# SERIES 83

## IMPACT RATED SINGLE HUNG WINDOW

### STANDARD FEATURES

- Virtually maintenance-free extruded aluminum construction with electrostatically applied finish
- Sleek profile provides larger viewing area
- Interior glazing allows for easier glass replacement
- Side load removable bottom sash
- Block and tackle balance system
- Energy-efficient Warm Edge insulating laminated glass with PVB inner layer to maintain seal in high impact situations
- Sloped sill allows for proper water drainage to the exterior
- Structural meeting rail provides rigid stability and allows for a tighter, weather-resistant unit
- Frame depth 2-7/16"
- Dual lift rails on bottom sash for easy operation
- Flange (shown) or integral nailing fin for simple installation



### GLASS OPTIONS:

Low-E, Low-E<sup>SC</sup>, HP, HP<sup>SC</sup>, obscure and tempered

### GRILLE OPTIONS:

Color-coordinated grilles-between-the-glass (GBG) in 5/8" and 3/4" flat and 1-3/16" SDL

### PRODUCT CONFIGURATION:

Matching side lites, fixed panels, transoms, segmented transoms and a wide selection of architectural shapes.

### HARDWARE OPTION:

Safety vent latch to meet ASTM F2090-2008 requirements

### COLOR OPTIONS:

White, Bronze



### THERMAL PERFORMANCE

R Value	NFRC CERTIFIED			
	U Factor	SHGC	VT	
WARM EDGE				
7/8" Clear	1.52	0.68	0.57	0.65
7/8" Low-E	1.92	0.54	0.36	0.55
7/8" Low-E <sup>SC</sup>	1.92	0.54	0.33	0.43
7/8" HP Glass	2.04	0.50	0.36	0.55
7/8" HP <sup>SC</sup> Glass	2.04	0.50	0.33	0.43

All units are NAMI certified and rated in accordance with NFRC 100/200 standards by an AAMA accredited lab. Performance values reflect the performance of units tested with the following configuration: 7/8" IGU, impact glass (8mm with 3mm/.09mm/3mm laminated glass) over 3mm glass, no grilles.

R VALUE: Restrictive ambient air flow; U FACTOR: Rate of heat loss; SHGC: Solar Heat Gain Coefficient; VT: Visible Transmittance

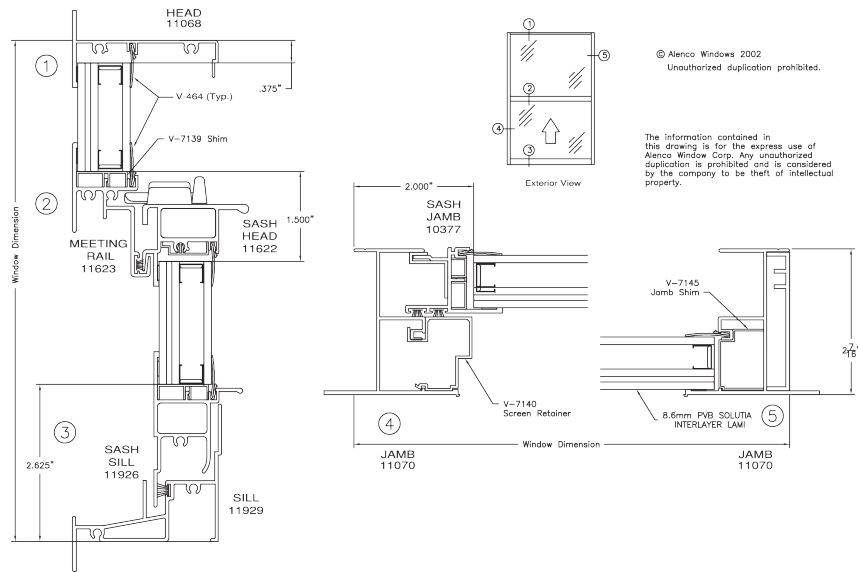
# RELIABILT® SERIES 83 IMPACT RATED SINGLE HUNG WINDOW

## TESTING & PERFORMANCE DATA

- 4712FIR/4712FLIR series single hung units are constructed to meet H-R50 performance.
- 4710FIR series single hung units are constructed to meet H-R40 performance.
- Rated in accordance with the International Residential Codes and meet impact requirements in U.S. Zone 2 (110-120 mph) and Zone 3 (120-140 mph).
- Passes ASTM E1886/1996 Large Missile Impact and Cycling Tests.
- Meets AAMA/WDMA/CSA 101/I.S.2/A440 standard. Florida Building Commission Approved.

Visit [www.floridabuilding.org](http://www.floridabuilding.org) for more information.

## FLANGE CROSS SECTIONS



## NAIL FIN CROSS SECTIONS

