



RELIABILT®

SERIES 83 SLIDING PATIO DOOR

STANDARD FEATURES

- Virtually maintenance-free extruded aluminum construction with electrostatically applied finish
- Available with or without nail fin (shown without; 7/8" or 1-3/8" setback)
- Knockdown frame to field assemble
- Reversible (before installation)
- Mortise lockset – stylish, functional and adjustable
- Adjustable tandem rollers for a more effortless operation and fine-tuning the fit and operation
- 5-9/16" frame depth
- Energy-efficient Warm Edge insulating tempered glass

GLASS OPTIONS:

Low-E, Low-E^{SC}, HP, HP^{SC} and obscure

GRILLE OPTIONS:

Color-coordinated grilles-between-the-glass (GBG) in 5/8" and 3/4" flat

PRODUCT CONFIGURATION:

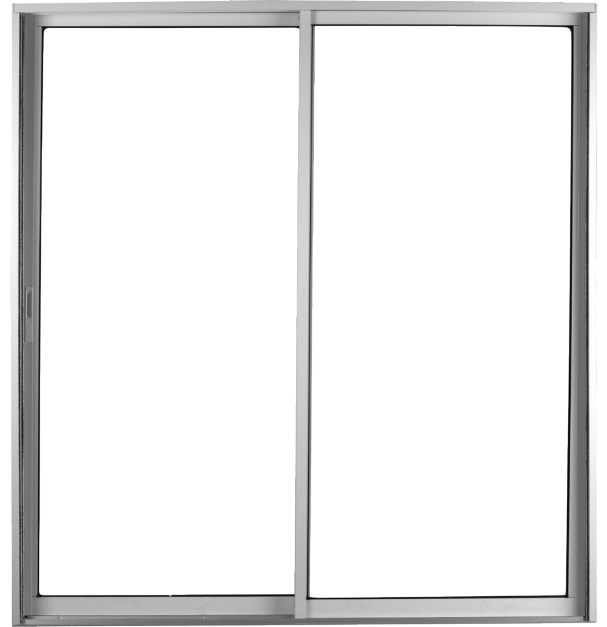
Matching side lites, fixed panels, 2, 3, or 4 panels (sliding) transoms, segmented transoms and a wide selection of architectural shapes. Available in optional pocket door configuration with 1, 2, or 3 panels.

HARDWARE OPTION:

Safety vent latch to meet ASTM F2090-2008 requirements

COLOR OPTIONS:

White, Adobe Grey, Bronze



THERMAL PERFORMANCE

R Value	NFRC CERTIFIED			
	U Factor	SHGC	VT	
WARM EDGE				
5/8" Clear	1.33	0.75	0.67	0.70
5/8" Low-E	1.59	0.63	0.32	0.59
5/8" Low-E ^{SC}	1.61	0.62	0.25	0.46
5/8" HP Glass	1.75	0.57	0.32	0.59
5/8" HP ^{SC} Glass	1.75	0.57	0.25	0.46

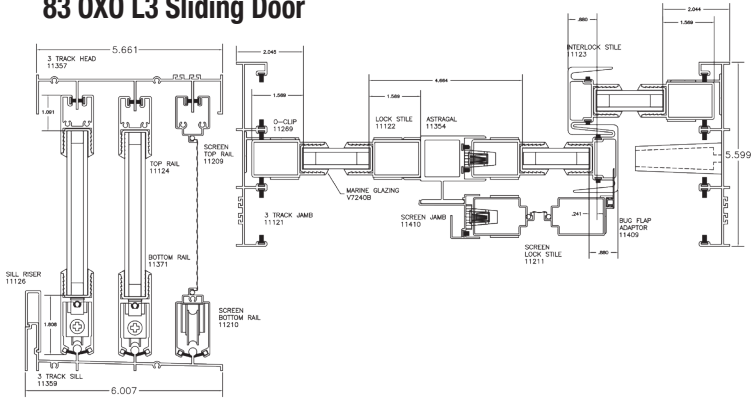
All units are NAMI certified and rated in accordance with NFRC 100/200 standards by an AAMA accredited lab. Performance values reflect the performance of units tested with the following configuration: 5/8" IGU, 3mm glass and no grilles.

R VALUE: Restrictive ambient air flow; U FACTOR: Rate of heat loss; SHGC: Solar Heat Gain Coefficient; VT: Visible Transmittance

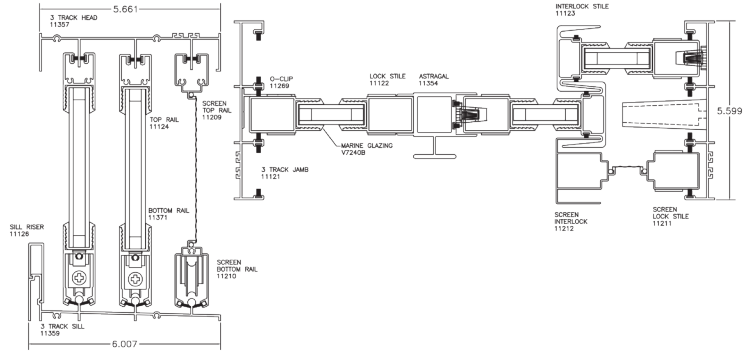
RELIABILT® SERIES 83 SLIDING PATIO DOOR

CROSS SECTIONS

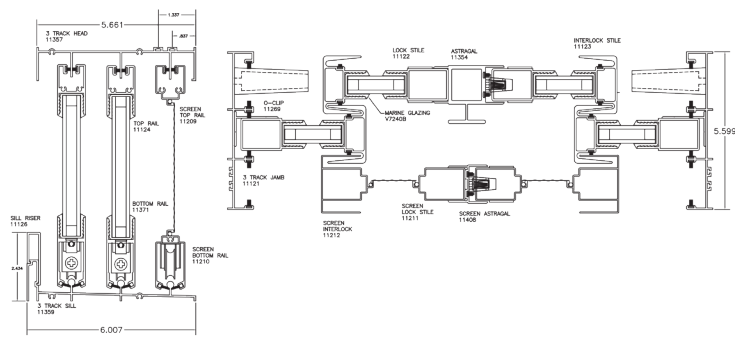
83 OXO L3 Sliding Door



83 OXX L3 Sliding Door



83 OXXO L4 Sliding Door



83 XXX L3 Sliding Door

