

## 130 Single Hung Window

### Features:

- Step Bevel design creates a beautiful exterior appearance
- Bottom sash tilts in for easy cleaning
- DP Rating R50 (window size tested 53 x 77)
- Block and tackle balance system for easy sash movement
- Warm-Edge spacer system provides energy saving thermal performance
- Aluminum reinforcement standard
- Dual sweep locks
- Dual weather-stripping
- Step sill design
- Fiberglass half screen
- Jamb depth: 3"
- Limited lifetime warranty

### Custom Options:

- **SELECT FROM FOUR FRAME TYPES:** Front Flange Only, Nail Fin Only (No J-Channel), J-Channel (Nail Fin and Front Flange), Box Frame (No Nail Fin and No Front Flange)
- Low-E Glass. Low-E Glass with Argon Gas and Ultra Low-E Glass with Argon Gas
- 5/8" or 3/4" flat, 5/8" or 1" contoured and 1 1/8" simulated divided lite (SDL) grids.
- Colonial, Diamond, Prairie (8 point) and 3 Lg Prairie / Perimeter (4 point) grid patterns.
- Factory mulling and factory prepared mulling
- Charcoal aluminum half screen
- Non-reflective Low-E Glass and Non-reflective Low-E Glass with Argon Gas
- Double strength and obscure glass
- Oriel and cottage styles
- Commodity sizing available (for Front Flange Only model)
- Nine exterior painted colors (white interior only)
- Bronze exterior laminate (white interior only)
- Custom sizes available

### Product Performance:

AAMA 101 Results:

Window Size	AAMA Rating (psf)	Air (cfm/ft <sup>2</sup> )	Water (psf)
53" x 77"	H-LC50	0.13	7.52

### Product Dimensions:

Vinyl Wall Thickness:	0.060"
Typ. Glass Thickness:	0.75"
Jamb Depth:	3"
Mullion Adder:	1.25"
Nail Fin Setback:	1.9375"
Front Flange:	0.625"

### Rough Opening:

Window Width + 1/2"  
 Window Height + 1/2"

### Size Restrictions:

	Min:	Max:
Width	18"	53"
Height	25"	96"

(Max. United Inches 144")



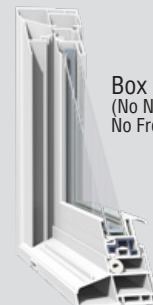
Nail Fin Only  
(No J-Channel)



Front Flange Only



J-Channel  
(Nail Fin and Front Flange)



Box Frame  
(No Nail Fin and No Front Flange)

## 130 Single Hung Window

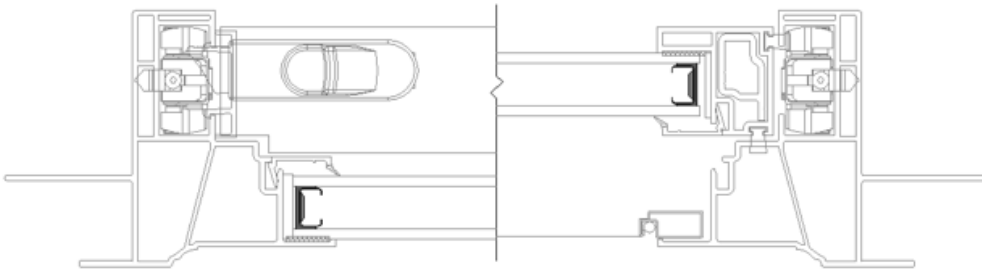
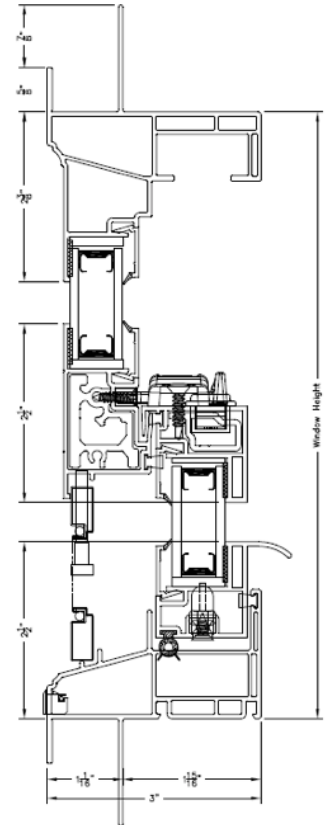
### Egress Formulas:

Egress Width  $\geq 20"$  and Egress Height  $\geq 24"$  and Egress Area  $\geq 5.7 \text{ ft}^2$  required to meet egress.  
 Egress Width Formula = Window Width - 4.75"  
 Egress Height Formula = (Window Height/2) - 3"  
 Egress Area Formula = (Egress Width x Egress Height)/144

### Half Screen Formulas:

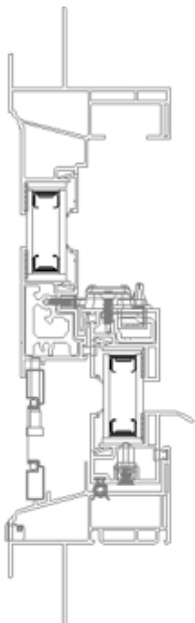
Window Width - 3.6875"  
 (Window Height/2) - 1.8125"

Series 130  
Vertical Diagram

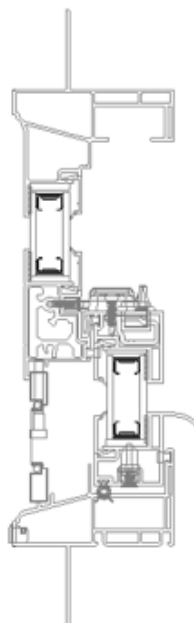


Series 130 Horizontal Diagram

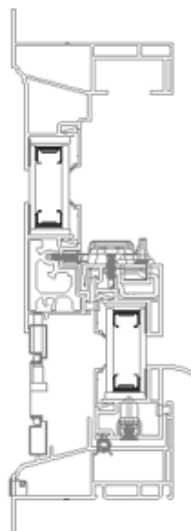
Four Vertical Diagrams



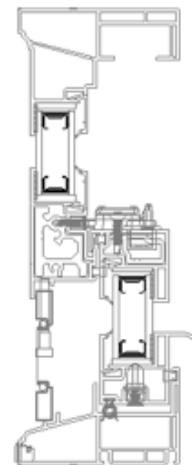
J-Channel  
(Nail Fin and  
Front Flange)



Nail Fin Only  
(No J-Channel)



Front Flange Only



Box Frame  
(No Nail Fin and  
No Front Flange)