

## 130 Sliding Window

### Features:

- **DP Rating R50**  
(window size tested 74" x 50" for 2-Lite and 108" x 50" for 3-Lite)
- DP Rating 40 (window size tested 74" x 63" 2-Lite)
- DP Rating 30 (window size tested 108" x 63")
- Step Bevel design creates a beautiful exterior appearance
- Tandom rollers ride easily along friction free channel
- Integrated glide rail for easy sash opening and closing
- Warm-Edge spacer system provides energy saving thermal performance
- Aluminum reinforcement standard
- Dual sweep locks
- Dual weather-stripping
- Step sill design
- Fiberglass half screen
- Jamb depth: 3"
- Limited lifetime warranty

### Custom Options:

- **SELECT FROM FOUR FRAME TYPES:**  
Front Flange Only, Nail Fin Only (No J-Channel), J-Channel (Nail Fin and Front Flange), Box Frame (No Nail Fin and No Front Flange)
- Low-E Glass, Low-E Glass with Argon Gas and Ultra Low-E Glass with Argon Gas
- 5/8" or 3/4" flat, 5/8" or 1" contoured and 1 1/8" simulated divided lite (SDL) grids.
- Colonial, Diamond, Prairie (8 point) grid patterns.
- Charcoal aluminum half screen
- Non-reflective Low-E Glass and Non-reflective Low-E Glass with Argon Gas
- Double strength and obscure glass
- Commodity sizing available (for Front Flange Only model)
- Nine exterior painted colors (white interior only)
- Bronze exterior laminate (white interior only)
- Custom sizes available

### Product Performance:

AAMA 101 Results:

Window Size	AAMA Rating (psf)	Air (cfm/ft <sup>2</sup> )	Water (psf)
74" x 50" (O/X)	HS-LC50	0.02	7.52
74" x 63" (O/X)	HS-LC35	0.02	7.52
108" x 50" (X/O/X)	HS-LC50	0.08	7.52
108" x 63" (X/O/X)	HS-LC30	0.08	7.52

### Product Dimensions:

Vinyl Wall Thickness:	0.060"
Typ. Glass Thickness:	0.75"
Jamb Depth:	3"
Mullion Adder:	1.25"
Nail Fin Setback:	1.9375"
Front Flange:	0.625"

### Rough Opening:

Window Width + 1/2"  
Window Height + 1/2"

### 2-Lite Slider Size Restrictions:

	Min:	Max:
Width	23 1/2"	74"
Height	11 1/2"	72"

### 3-Lite Slider Size Restrictions:

	Min:	Max:
Width	71 1/2"	108"
Height	11 1/2"	63"



130 2-lite slider with front flange

## 130 Sliding Window

### Egress Formulas:

Egress Width  $\geq 20"$  and Egress Height  $\geq 24"$  and Egress Area  $\geq 5.7 \text{ ft}^2$  required to meet egress.

Egress Width Formula =  $XO/OX = (\text{window width}/2) - 3.75"$

XOX 1/3 1/3 1/3 =  $(\text{window width}/3) - 3.3125"$

XOX 1/4 1/2 1/4 =  $(\text{window width}/4) - 3.875"$

Egress Height Formula =  $(\text{Window Height}) - 5.00"$

Egress Area Formula =  $(\text{Egress Width} \times \text{Egress Height})/144$

### Screen Formulas:

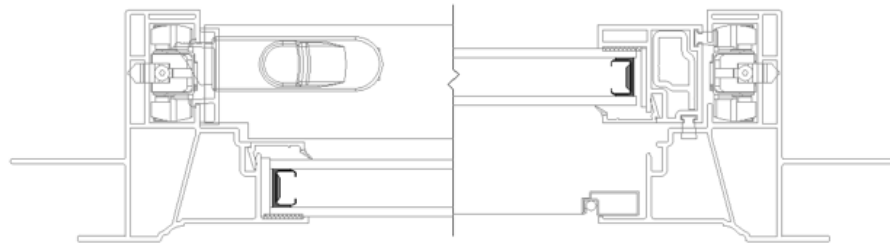
Width:  $XO/OX = (\text{window width}/2) - 3.00"$

XOX 1/3 1/3 1/3 =  $(\text{window width}/3) - 2.5625"$

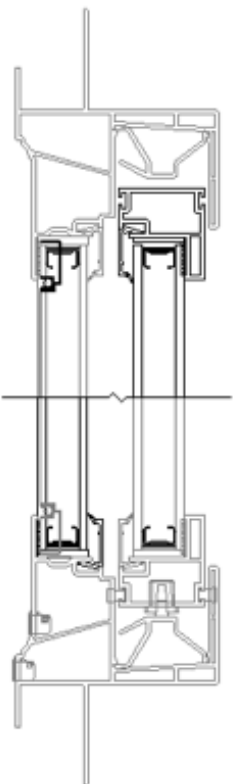
XOX 1/4 1/2 1/4 =  $(\text{window width}/4) - 3.125"$

Height:  $\text{window height} - 3.875"$

### Series 130 Horizontal Diagram



### Series 130 Vertical Diagram



### Series 130 Horizontal Diagrams

